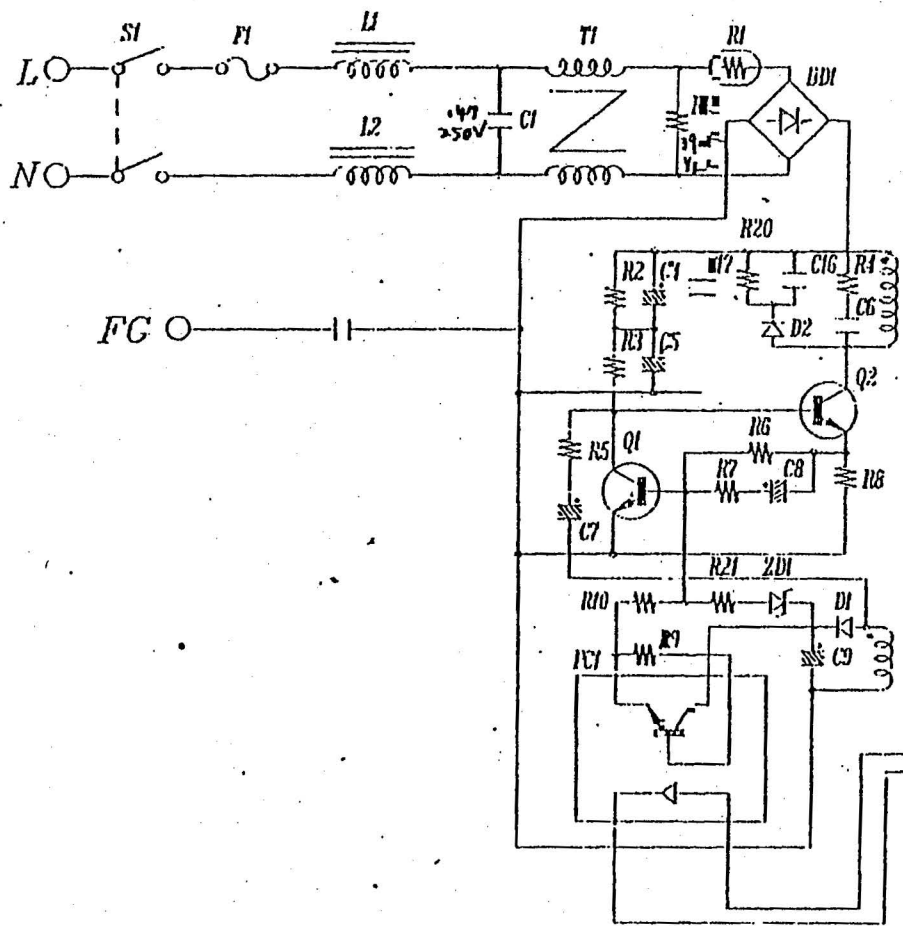
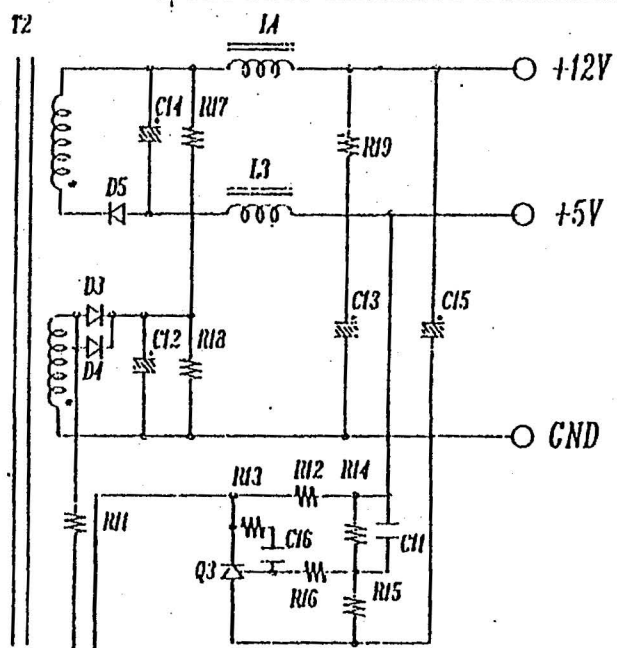


A
B
C
D
E
F

528-409
2/4



| REVISION | | | | |
|----------|------|-------------|------|---------|
| ISSUE | ZONE | DESCRIPTION | DATE | REVISER |
| | | | | |



| | | | |
|---|------------------------|--------|-----|
| DEE VAN ENTERPRISES CO.; LTD. | | | |
| DEPT: R&D | PART NAME: SCHEMATIC | | |
| MATERIAL: | MODEL NO: DSP-508A | | |
| FINISH: | PART NO: 99S050800-001 | | |
| TOLERANCE: 0.00=±0.3 0.0=±0.1 0.00=±0.05 | DWG. NO: /JK/508A/CKT | | |
| SCALE: / UNIT: mm | QTY: pcs / set. | | |
| APPD.: | CKD: | DSGN.: | DWG |

B:G.M. FOR DSP-508A

DATE:11-18-89!

528-409
3/4DESCRIPTION/SPECIFICATIONPART LOCATION

| | |
|---|----------|
| THERMISTOR 10Q 5 OHM | R1 |
| 1/2W 150K OHM | R2 |
| 1/2W 150K OHM | R3 |
| 22W 330 OHM | R4 |
| 2W 51 OHM | R5 |
| 1/4W 3.3K OHM | R6, R13 |
| 1/4W 16 OHM | R7 |
| 1 W 1 OHM | R8 |
| 1/4W 120 OHM | R9 |
| 1/4W 220K OHM | R10 |
| 1/4W 120 OHM | R11, R12 |
| 1/4W 4.7K OHM - 6.8K OHM (5.1K OHM) | R14, R15 |
| 1/4W 470 OHM | R16 |
| 1/2W 1K OHM | R17 |
| 1/2W 220 OHM | R18 |
| 1/2W 390K OHM | R19 |
| 2W 47K OHM | R20 |
| 1/4W 470 OHM - 1K OHM | R21 |
| 3W 47 OHM - 2W 91 OHM (68 OHM 2W) | R22 |
| X-CAP. 0.47UF 250V AC | C1 |
| Y-CAP. 4700PF 250V AC | C2 |
| 47UF 250V (MIN) | C4, C5 |
| 470PF 1KV (MIN) | C6 |
| 330UF 25V (MIN) | C7 |
| 1UF 50V | C8 |
| 100UF 25V | C9 |
| 2200PF 50V | C10 |
| 0.22UF 50V | C11 |
| 2200UF 25V | C12, C13 |
| 330UF 25V | C14, C15 |
| 0.1UF 630V | C16 |
| FR12 | D1 |
| FR157 | D2 |
| RGP308 OR EQUIVALENT | D3, D4 |
| SB340 OR EQUIVALENT | D5 |
| 7.5B3 OR EQUIVALENT | ZD1 |
| 2SD667 OR EQUIVALENT | Q1 |
| BU508A, 2SC2979, 2SC3679, OR EQUIVALENT | Q2 |
| TL431C, HA17431, HA17431C, UA431AWC | Q3 |
| 4N28 | PCI |
| FUSE 250V 2A | FUSE1 |
| RECT-DIODE W08M, W10M OR EQUIVALENT | DB1 |